

Independent School District 834
Stillwater Area Public Schools

2010-2011 ANNUAL REPORT

on Curriculum, Instruction and Student Achievement



OUR MISSION:

As Minnesota's first public school district and the premier educational choice in the St. Croix Valley, Stillwater Area Public Schools ensure a rigorous and relevant education where all learners are valued, positive relationships are developed and students are prepared for life-long learning in a global society.



**STILLWATER AREA
PUBLIC SCHOOLS**

We learn not for school but for life

“Curriculum is the sequencing or pacing of the content along with experiences students have with that content.”

Robert Marzano

S Stillwater Area Public Schools 2010-2011 Annual Report on Curriculum, Instruction and Student Achievement includes information about how our students are doing, along with the district's plans and programs for continuous improvement of our instructional programs.

A more comprehensive look at our schools will be mailed to all residents this fall as part of the annual shareholder's report.

More information can be found on-line at www.stillwater.k12.mn.us or by calling the Division of Teaching and Learning at 651-351-8405.



Stillwater Area Public Schools Curriculum Review Cycle

	2010-2011	2011-2012	2012-2013	2013-2014	2014-2015	2015-2016	2016-2017
Implementation Year for Revised State Standards	Math and Arts	Science	Literacy and Language Arts	Social Studies			
Year 1: Study, Audit, Alignment	Literacy and Language Arts	Social Studies	Career and Tech Visual Arts	World Languages		Math	Science PE/Health Music
Year 2: Alignment cont. Recommendations	Science PE/Health Music	Literacy and Language Arts	Social Studies	Career and Tech Visual Arts	World Languages		Math
Year 3: Staff Development, Implementation	Math	Science PE/Health Music	Literacy and Language Arts	Social Studies	Career and Tech Visual Arts	World Languages	
Year 4: Implementation, Monitor and Adjust		Math	Science PE/Health Music	Literacy and Language Arts	Social Studies	Career and Tech Visual Arts	World Languages
Year 5: Evaluation			Math	Science PE/ Health Music	Literacy and Language Arts	Social Studies	Career and Tech Visual Arts
Monitor and Adjust				Math	Science PE/Health Music	Literacy and Language Arts	Social Studies

Implementation of New Materials*

2010-11Math 2011-12PE/Health, Music & Science 2012-13 Language Arts

*Pending available resources

Curriculum Advisory Council 2011-2012 Membership

Name	Representation	Term	Name	Representation	Term
Emma Bliven	Student	2011-12	Corey Quick	Teacher	2010-12
Steven Bliven	Teacher	2010-13	Colleen Robinson	Alumni	2010-13
Glenn Boettcher	Teacher	2010-13	Daniel Ruh	Parent	2010-13
Lori Brink	Director	2011-13	Lisa Schoelerman	Teacher	2010-12
Mark Drommerhausen	Principal	2011-13	Heidi Vlasak	Parent	2010-12
Wayne Feller	Technology Integration Specialist	2011-13	Crista Walsh	Parent	2010-12
Natasha Fleischman	Board Member	2011-13	Caroline Ylitalo	Parent	2010-12
Ginny Kruse Rudolph	Director	2011-13	Rotating Members from Counseling Department		
Mary Leadem Ticiu	Assistant Principal	2010-13	Rebecca Keller	Staff	2010-13
Ann Malwitz	Parent	2011-12	Kristina King	Staff	2010-13
Mary Messler	Director	2011-13	Kate Nelson	Parent/Staff	2010-13
Bevin O'Brien	Teacher/Parent	2010-12	Chris Otto	Staff	2010-13
Paula O'Loughlin	Parent	2010-13	Sandra Weaver	Staff	2010-13

Stillwater Area Public Schools Assessment and Testing Program

Stillwater Area Public Schools administers two types of standardized tests to students across multiple grade levels. In addition to teacher-designed assessments, these tests help to determine academic progress and readiness for advanced instruction, develop and implement curriculum and programs, and assist individual student planning. A chart listing district assessments is included on pages 4-5.

- Performance Series (PS) is a nationally-standardized, computer-adaptive assessment of reading and mathematics that measures student academic growth over time. PS assessments are administered in the fall, (winter as requested by teachers) and spring to students in grades 2-9. Teachers receive numerous detailed student performance reports indicating which Minnesota academic standards students have mastered. Teachers use this information to group students for instruction and to design personalized learning opportunities. Parents also receive detailed information regarding student achievement on the Performance Series assessment twice per year.
- Minnesota Comprehensive Assessments (MCA II) measure student achievement of state standards in reading, math, science, and writing. MCA II testing is required by the state, in compliance with the No Child Left Behind Act (NCLB), in order to demonstrate that schools and districts are making Adequate Yearly Progress (AYP).

Graduation Required Assessment for Diploma Tests (GRAD)

According to Minnesota law, all students must pass GRAD tests in written composition, reading and mathematics before they may be awarded a diploma from a Minnesota public school. Students have their first opportunity to take the written composition test in 9th grade, reading in 10th grade and mathematics in 11th grade. If students do not pass on their initial attempt they have additional opportunities to achieve a passing score throughout their high school years.



Grad Tests 2010-2011

- Total enrollment in grades 9-12 is 2,810
- 642 or 97% of 9th graders passed the GRAD writing test
- 584 or 91% of 10th graders passed the GRAD reading test
- 512 or 75% of 11th graders passed the GRAD math test

Comprehensive Student Assessment Program: 2010-2011

DISTRICT ASSESSMENTS				
ASSESSMENT	OBJECTIVES	GRADE LEVEL	TIME OF YEAR	SUBJECT AREA
Performance Series	<ul style="list-style-type: none"> To measure growth in individual student learning To help plan instructional programs To place new students in appropriate courses To guide curriculum and instruction 	2-9	Fall & Spring Winter as requested by teachers	Reading Math
Literacy First Classroom Assessments	<ul style="list-style-type: none"> To measure student progress To guide curriculum and instruction 	K-6	Fall, Winter & Spring	Reading
Classroom teacher-designed assessments	<ul style="list-style-type: none"> Developed by individual teachers to assess student academic growth and needs 	K-12	Ongoing	All areas to measure student progress
End of Course Assessments (EOC)	<ul style="list-style-type: none"> To measure growth in individual student learning To help teachers plan instructional programs 	7-12	End of Course	All areas to measure student progress
Common Formative Assessments	<ul style="list-style-type: none"> To place new students in appropriate courses 	K-6	Throughout the year	Math
PLAN	<ul style="list-style-type: none"> To explore future educational options 	10	Fall	English, Math, Reading, and Science
Accuplacer	<ul style="list-style-type: none"> To assist students and families with post-secondary planning 	10	Fall	English, Math, and Reading
PSAT	<ul style="list-style-type: none"> To serve as a milestone in longitudinal program evaluation National Merit Scholarships 	10 or 11	Fall	English, Math, Reading, and Science
EXPLORE	<ul style="list-style-type: none"> To analyze the relationship between instruction and academic skill development 	8	Spring	English, Math, Reading, and Science
Computational Fluency	<ul style="list-style-type: none"> To measure math computational skills 	K-6	Fall, Winter & Spring	Math
Algebra Readiness	<ul style="list-style-type: none"> Class placement determination 	6	Spring	Math

OPTIONAL ASSESSMENTS FOR INDIVIDUAL STUDENTS

ASSESSMENT	OBJECTIVES	GRADE LEVEL	TIME OF YEAR	SUBJECT AREA
Advanced Placement Tests	<ul style="list-style-type: none"> To advance student standing in college admissions/college credits 	9-12	Spring	Many academic content areas
Gifted and Talented Screening	<ul style="list-style-type: none"> To identify students eligible for Gifted and Talented Programming 	2-8	Spring	All

STATE MANDATED ASSESSMENTS

ASSESSMENT	OBJECTIVES	GRADE LEVEL	TIME OF YEAR	SUBJECT AREA
Minnesota Comprehensive Assessments-II (MCA-II)	<ul style="list-style-type: none"> To comply with national and state mandated testing To be accountable to state academic standards To guide District-level program evaluation and development To guide curriculum and instruction 	3-8 10 11 5, 8 & 10	Spring Spring Spring Spring	Reading and Mathematics Reading Mathematics Science
Graduation Required for Diploma Tests (GRAD) <i>Embedded in MCA-II Tests</i>	<ul style="list-style-type: none"> To comply with state mandated testing To ensure students have attained competency 	9 10 11	Spring – all students retakes in summer Spring – all students retakes monthly Spring – all students retakes monthly	Written Composition Reading Math
Test of Emerging Academic English (TEAE)	<ul style="list-style-type: none"> To define listening, speaking, reading, and writing skills for English Language Learners 	3-12 ELL Students	Spring	Reading and Writing
Student Oral Language Observation Matrix (MN SOLOM)	<ul style="list-style-type: none"> To comply with state and national mandates 	K-12 ELL Students	Spring	Speaking and Listening
Minnesota Academic Skills Test – Alternate Assessment	<ul style="list-style-type: none"> To comply with state/national mandates To assess status of severely disabled special education students 	3-8 10 11	Spring Spring Spring	Reading and Mathematics Reading Mathematics
NAEP – National Assessment of Educational Progress	<ul style="list-style-type: none"> To comply with national mandate 	Selected schools & students 4, 8, 12	Winter (Bi-annually determined by MDE)	Reading, Math, and Science

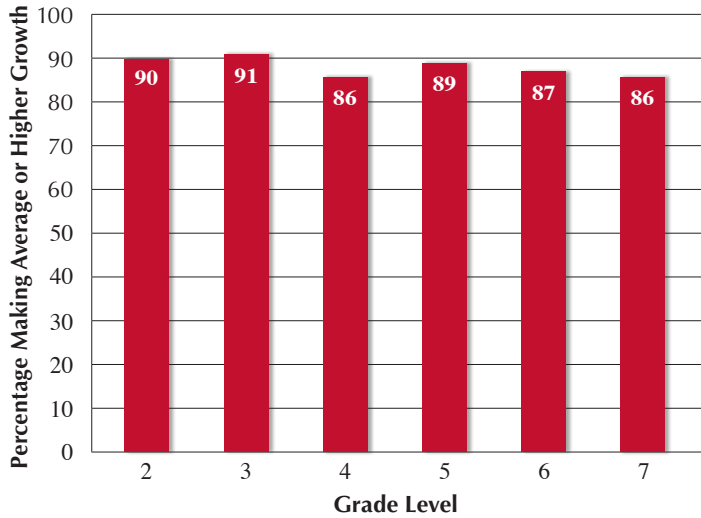
***For additional information contact the
Division of Teaching and Learning at 651-351-8405.***

Links to some of the assessments can be found online at www.stillwater.k12.mn.us.

Stillwater Area Public Schools Testing Program Results

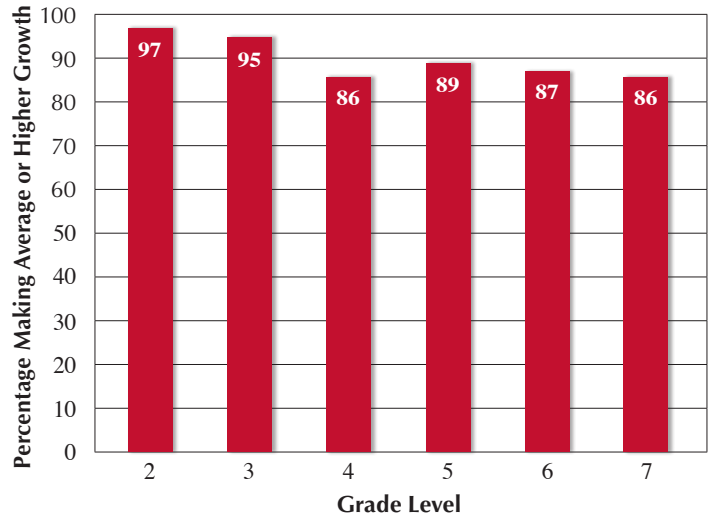
Performance Series Reading 2010-11

Percentage of Students Making Average or Higher Growth

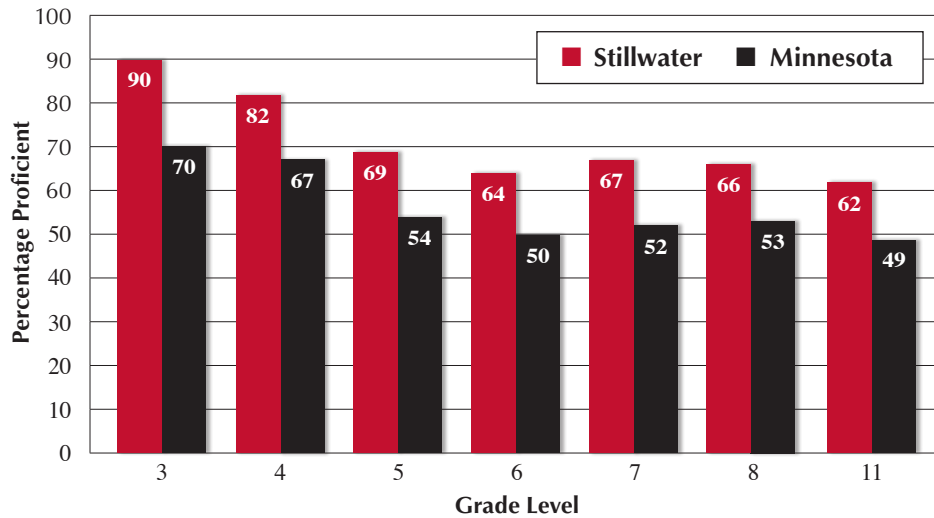


Performance Series Math 2010-11

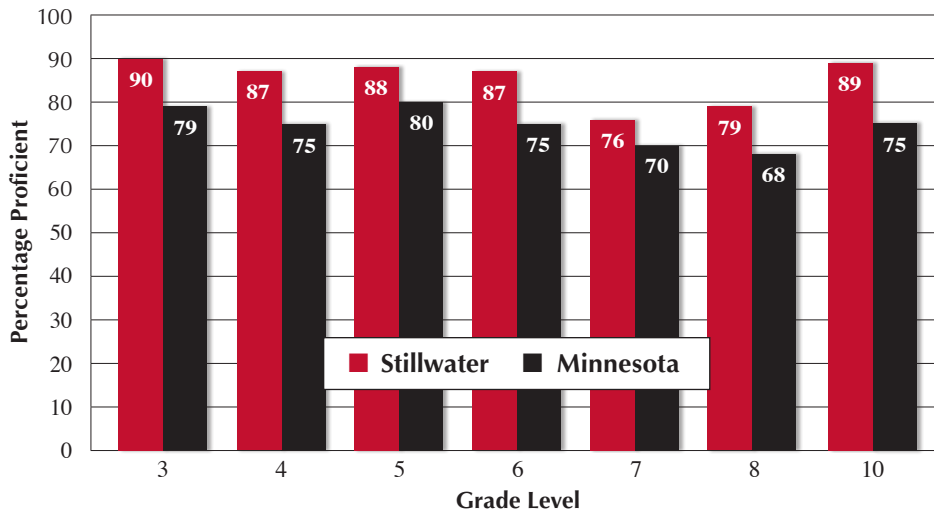
Percentage of Students Making Average or Higher Growth



MCA-III Math – Percentage of Students Proficient 2011



MCA-II Reading – Percentage of Students Proficient 2011



MCA-II Science

The MCA-II science tests are given in grades 5 and 8, and to students at the high school upon completion of a life science course.

MCA-II Science - Percentage of Students Proficient 2011

	5th grade	8th grade	High school
STW	67.0	57.0	66.0
MN	46.0	44.0	54.0

Additional testing information is available on the Minnesota Department of Education's website at <http://education.state.mn.us>

Advanced Placement (AP)

Number of students taking Advanced Placement tests continues to rise

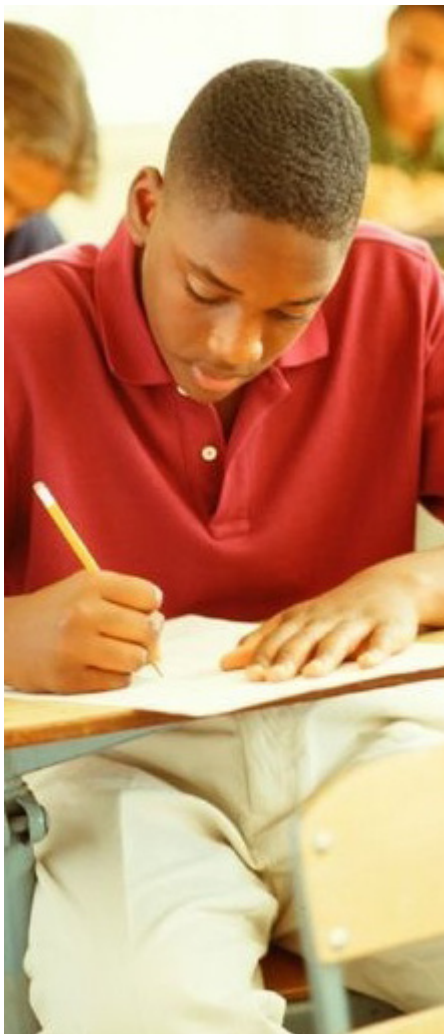
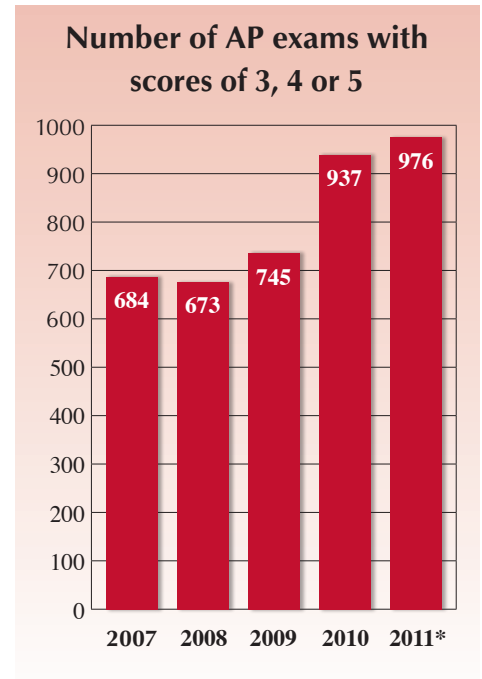
More students are enrolling in one or more of 18 Advanced Placement courses and taking the end of course exams in an attempt to earn college credit. The AP program allows high school students to earn credit or advanced standing at most of the nation's colleges and universities.

A total of 851 students in grades 9-12 took AP exams last spring. Of those students, 77 percent* received scores of 3, 4, or 5, which are needed to receive college credit. Many students choose to take more than one AP course and exam.

The addition of an AP Human Geography course offered to ninth grades at both Oak-Land and Stillwater Junior High has accounted for some of the increase in recent years. The ninth-grade course was first offered in 2008.

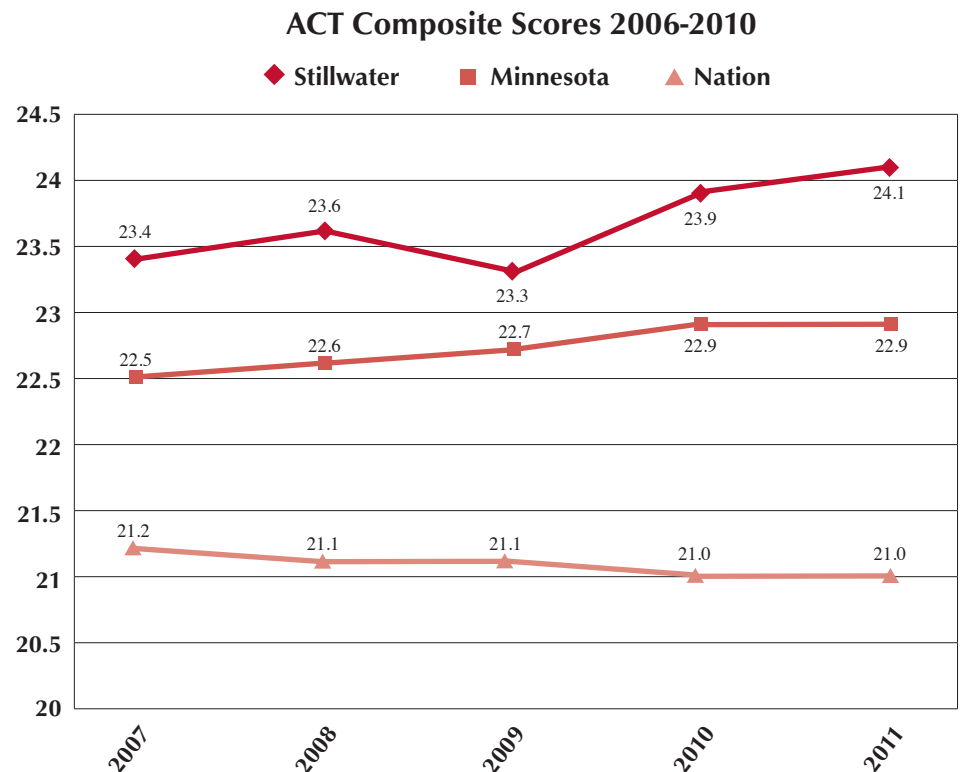
*Missing approximately 18 late test results.

Stillwater Area Public Schools



ACT

Stillwater students earn higher ACT scores than students statewide and nationwide.





MISSION:

Our Core Purpose

As Minnesota's first public school district and the premier educational choice in the St. Croix Valley, Stillwater Area Public Schools ensure a rigorous and relevant education where all learners are valued, positive relationships are developed and students are prepared for life-long learning in a global society.

BELIEF STATEMENTS

Our Shared Beliefs about Our Work

- Students are the primary focus of all decisions.
- A safe, supportive and engaging learning environment will foster excellence.
- Student learning is enhanced when there is a united effort and positive communication among home, school and community.
- A student's well being is enhanced by positive relationships and mutual respect among and between students and staff.
- Student growth occurs when students are actively engaged in rigorous and relevant learning.
- Student learning takes place 12 months a year through educational programs that offer extended learning opportunities for the growth of all learners.
- Excellence in learning is directly related to excellence in teaching.
- Valuing the strength found in a diverse world is essential to high quality learning.
- Creativity, innovation and initiative are encouraged and celebrated.
- Each student, family and staff member has inherent dignity and the right to equitable and respectful educational experiences.
- All students have the right to learn, regardless of their ability, race, sex, creed, socio-economical level or disability.

VISION 2014

What We Commit to Create

In partnership with families and community, Stillwater Area Public Schools will provide ALL students with individualized and comprehensive learning experiences, preparing them for post-secondary education, fulfilling careers and positive contributions in the global society through:

- Safe and personal learning environments
- Excellence in teaching and learning
- A rigorous and relevant curriculum with high expectations
- Effective and efficient use of the district's resources of time, talent and finances

STRATEGIC DIRECTIONS

Allocating Our Resources to Encourage Creativity and Innovation

- A. Increase learning expectations and academic achievement for ALL students
- B. Deliver personalized learning opportunities within the E-12 educational program
- C. Provide a safe, respectful, caring environment to facilitate learning
- D. Recruit, hire and retain quality employees and invest in their development to enhance student learning
- E. Provide high-quality educational facilities and equipment that support effective student learning and opportunities
- F. Engage our community in partnership to live our Mission and achieve our Vision
- G. Operate with excellence in management and governance